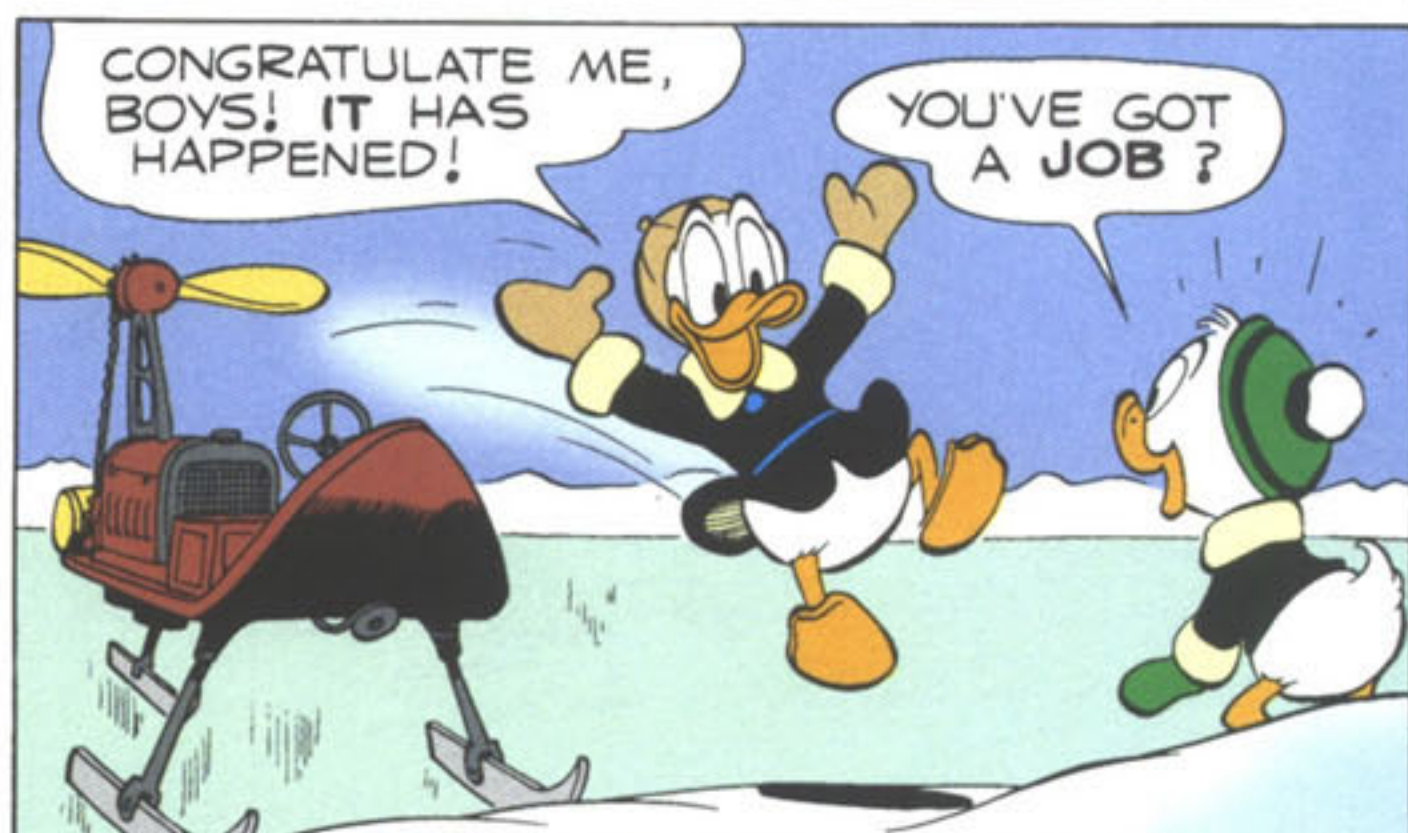
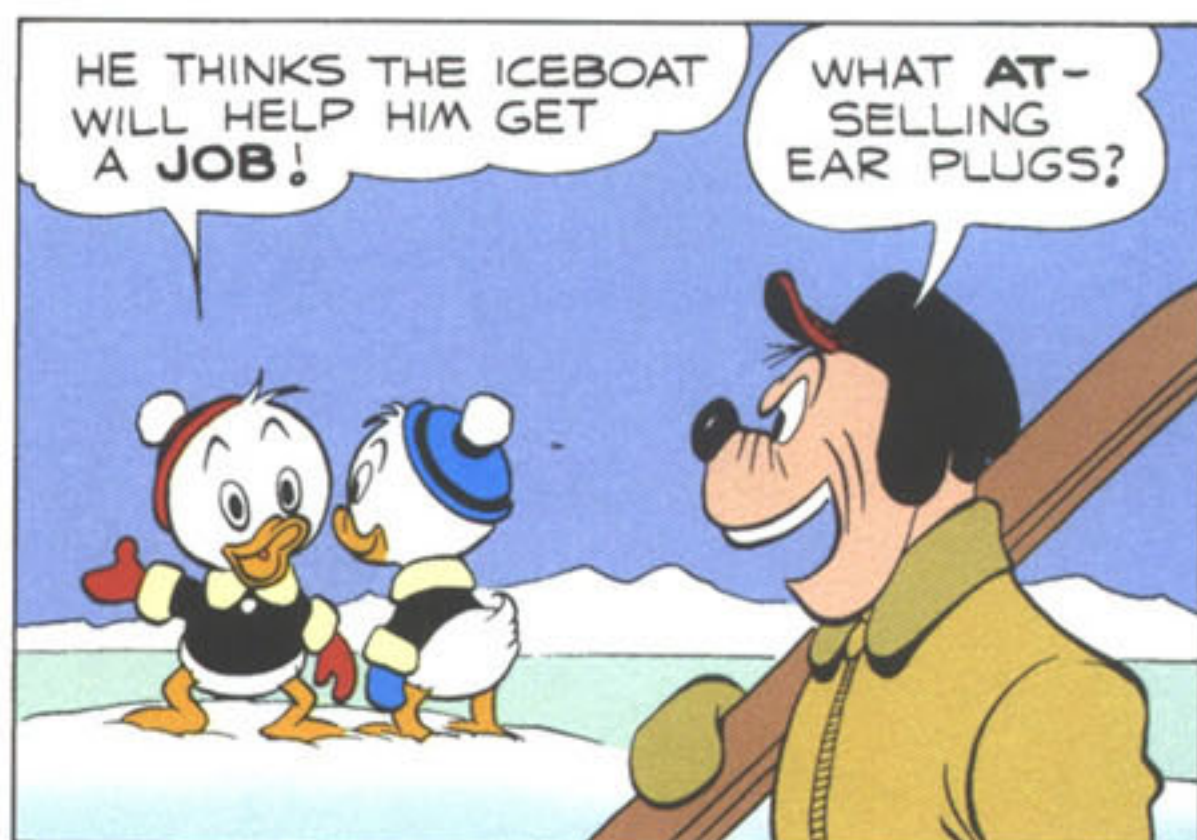
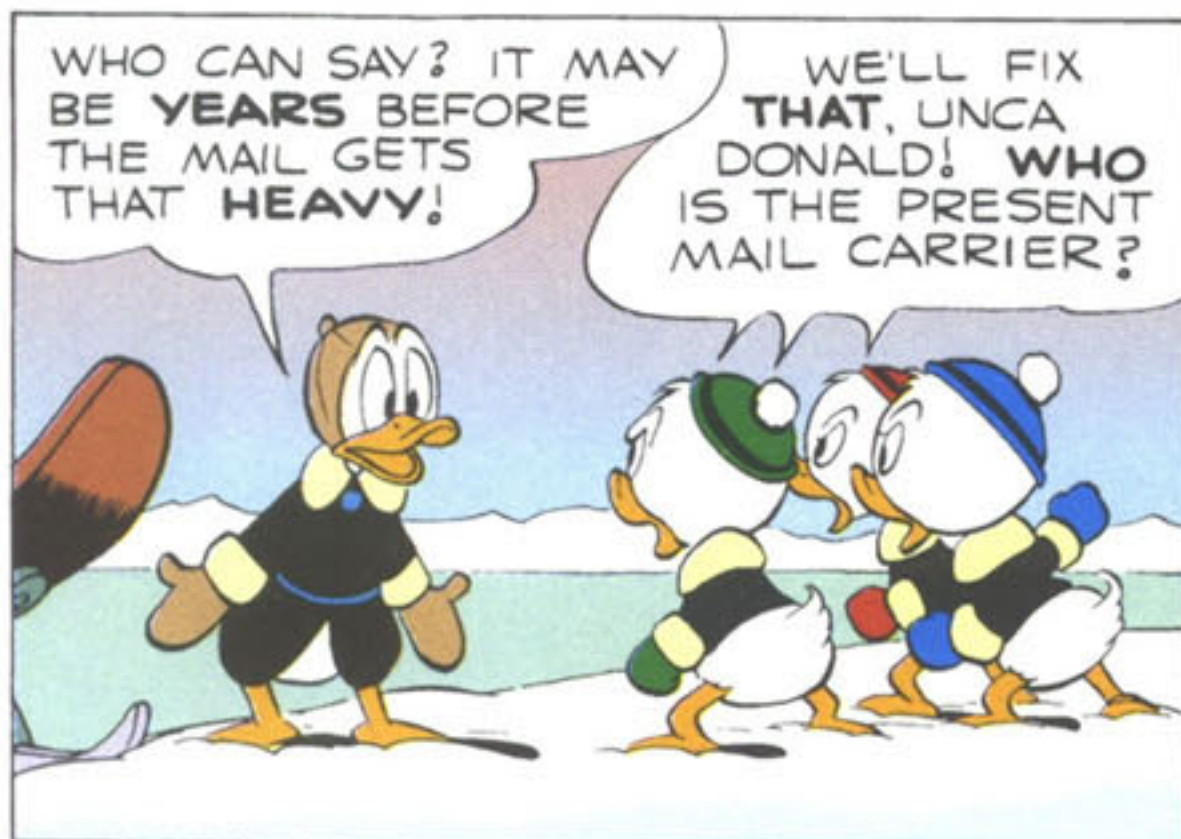
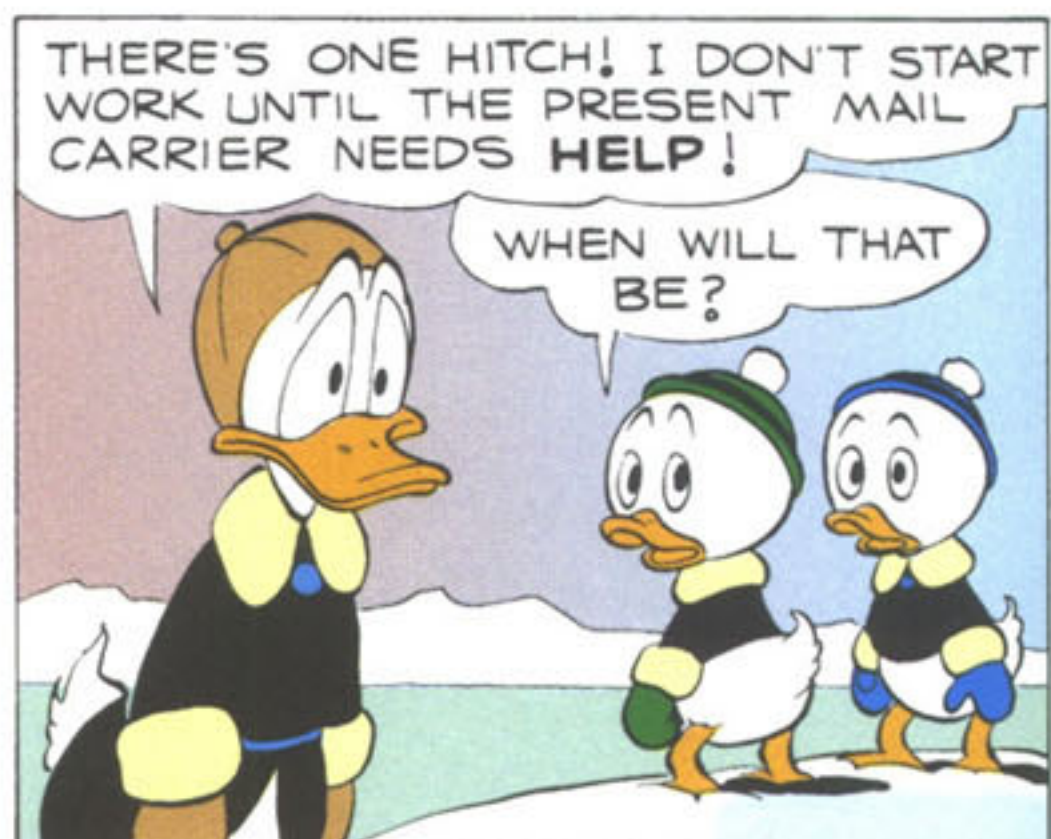
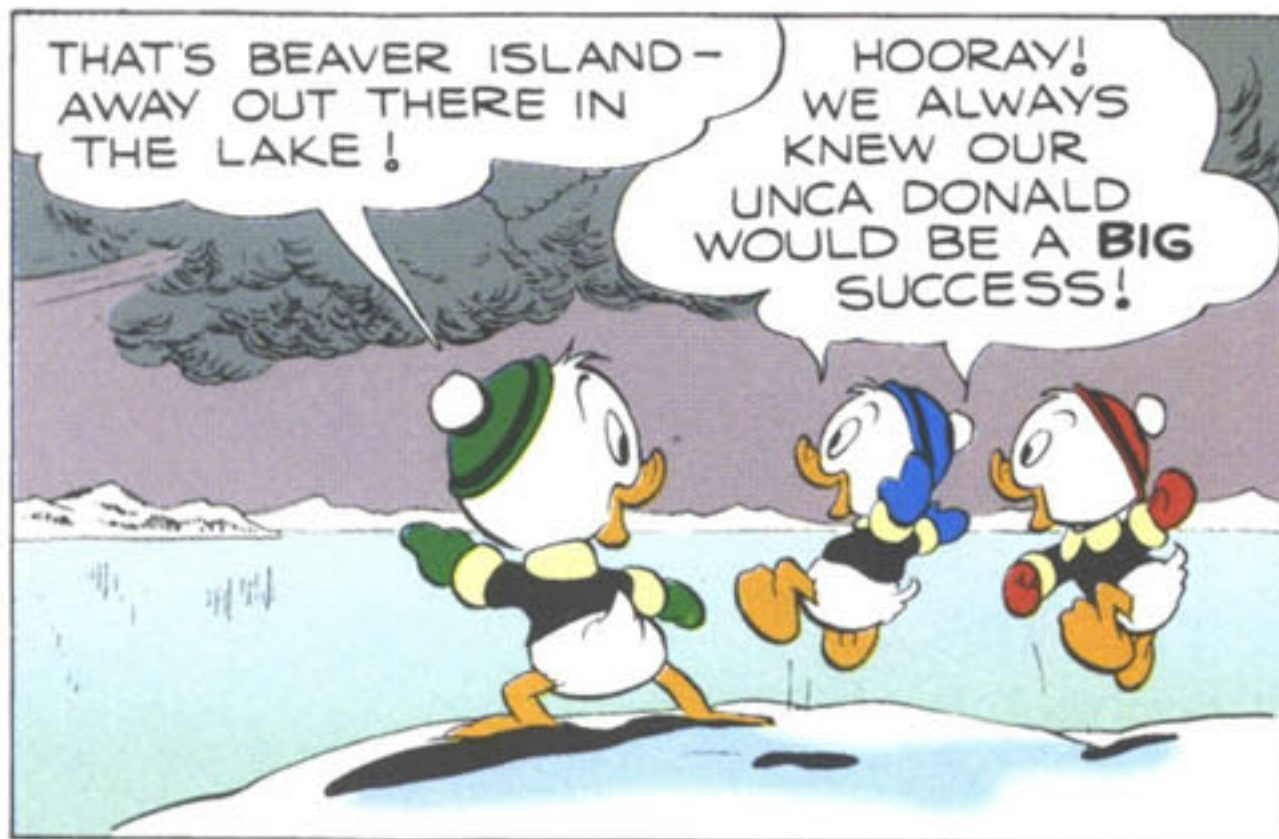
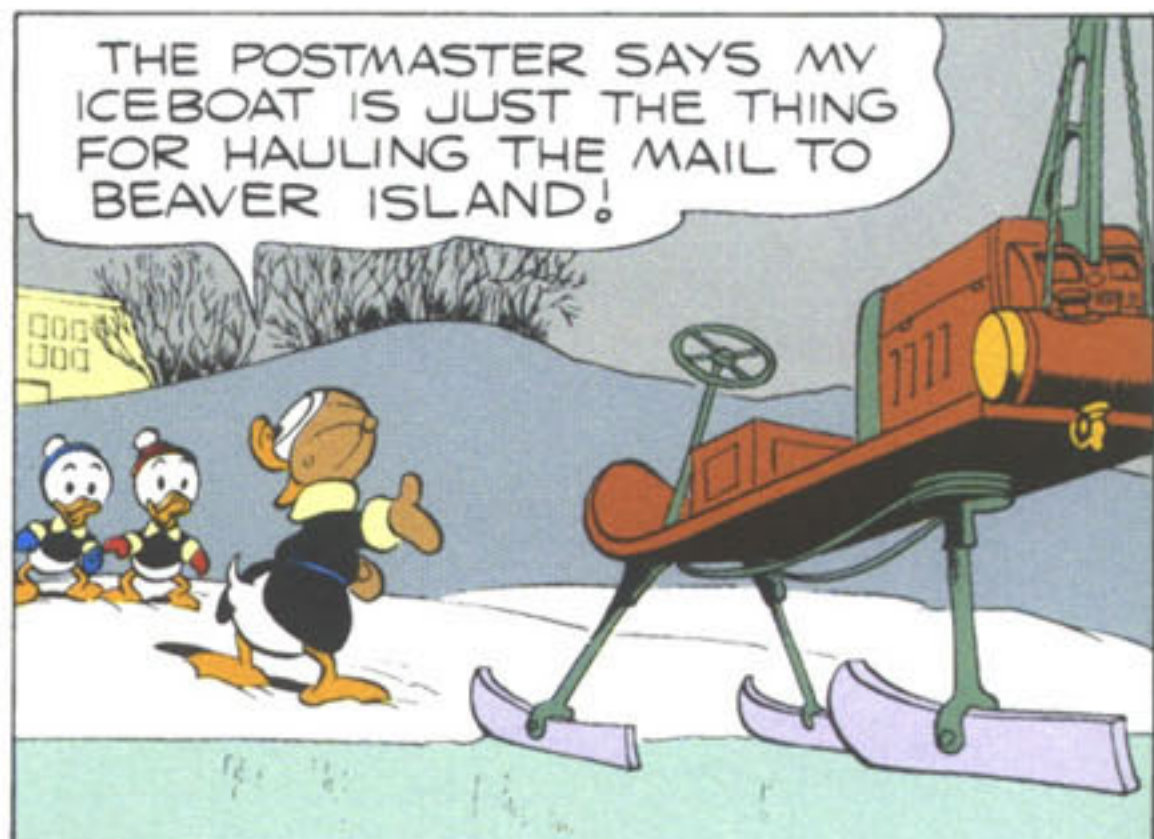
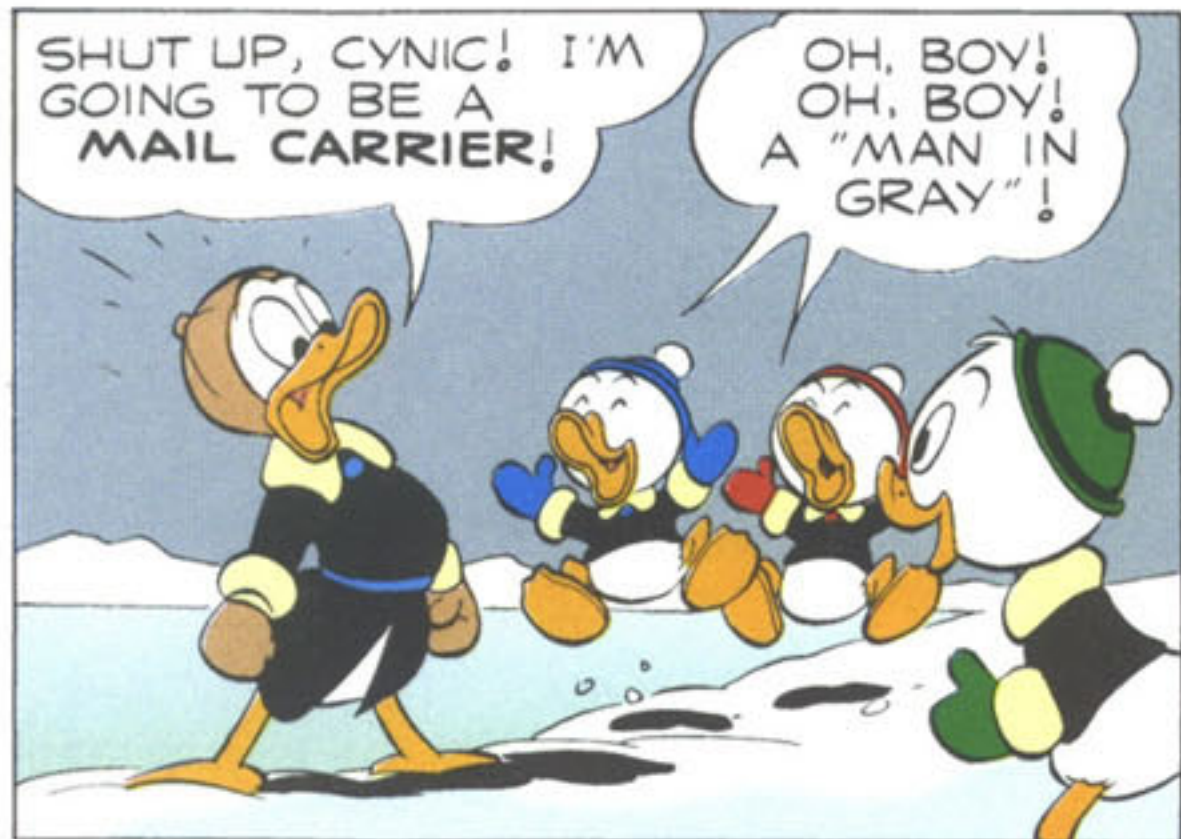
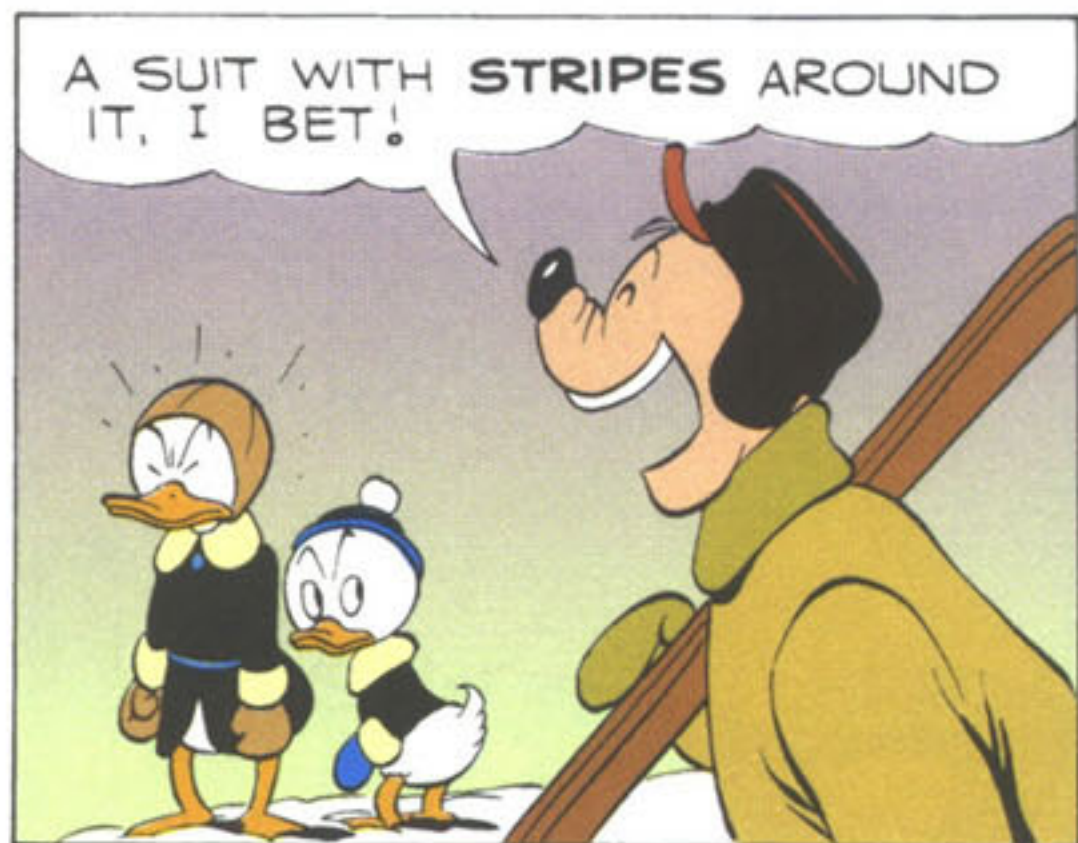
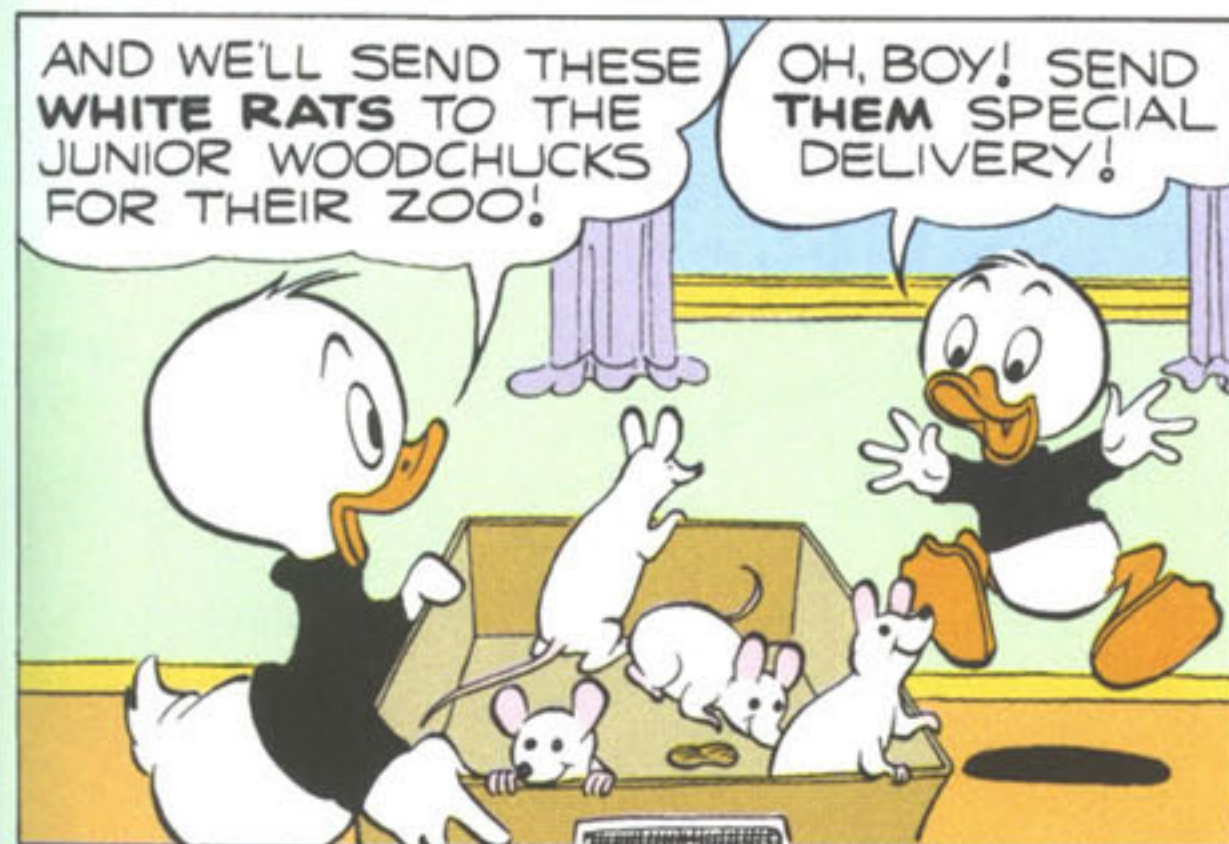
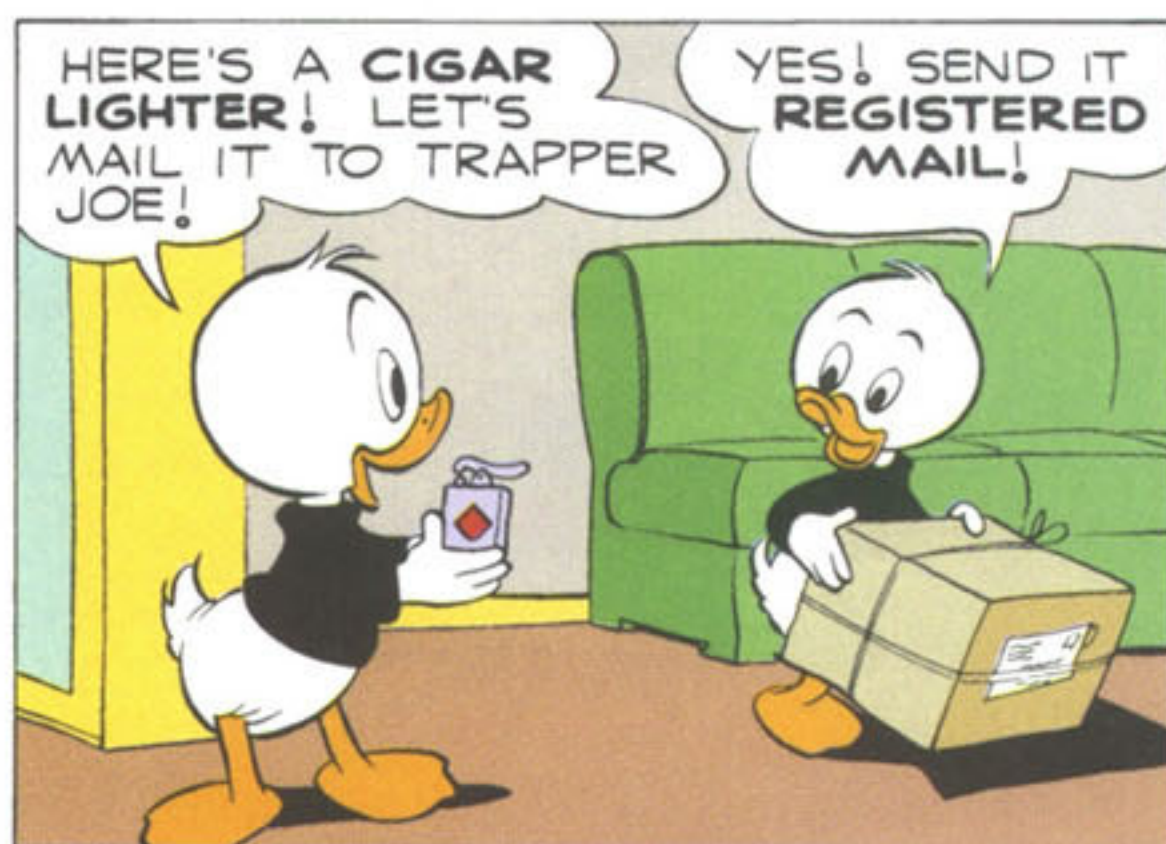
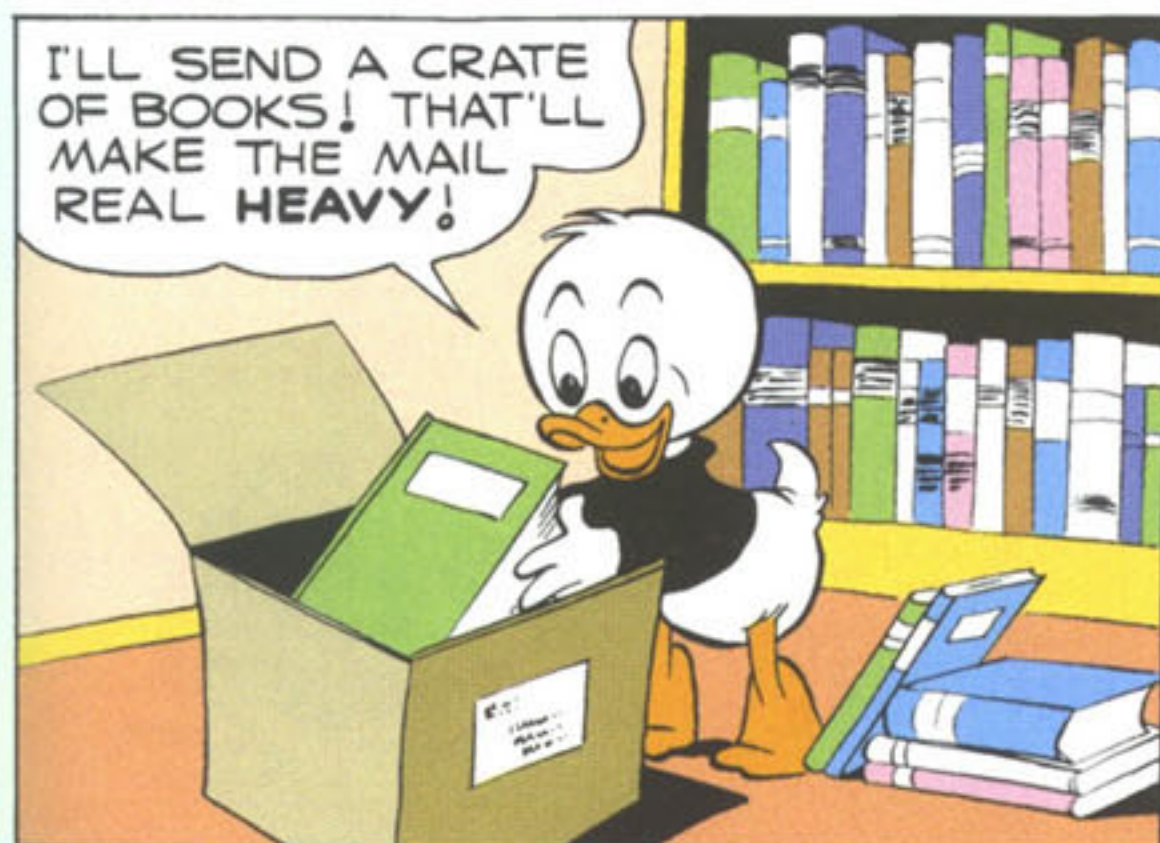


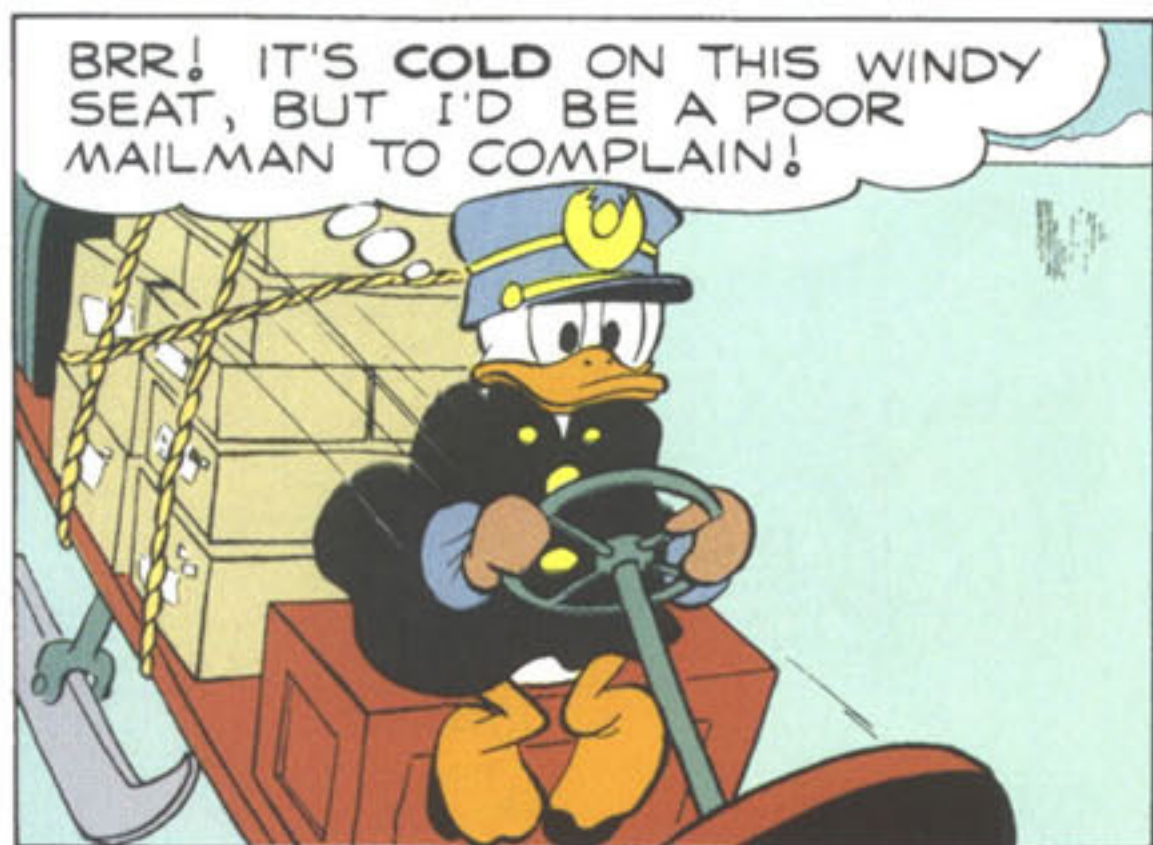
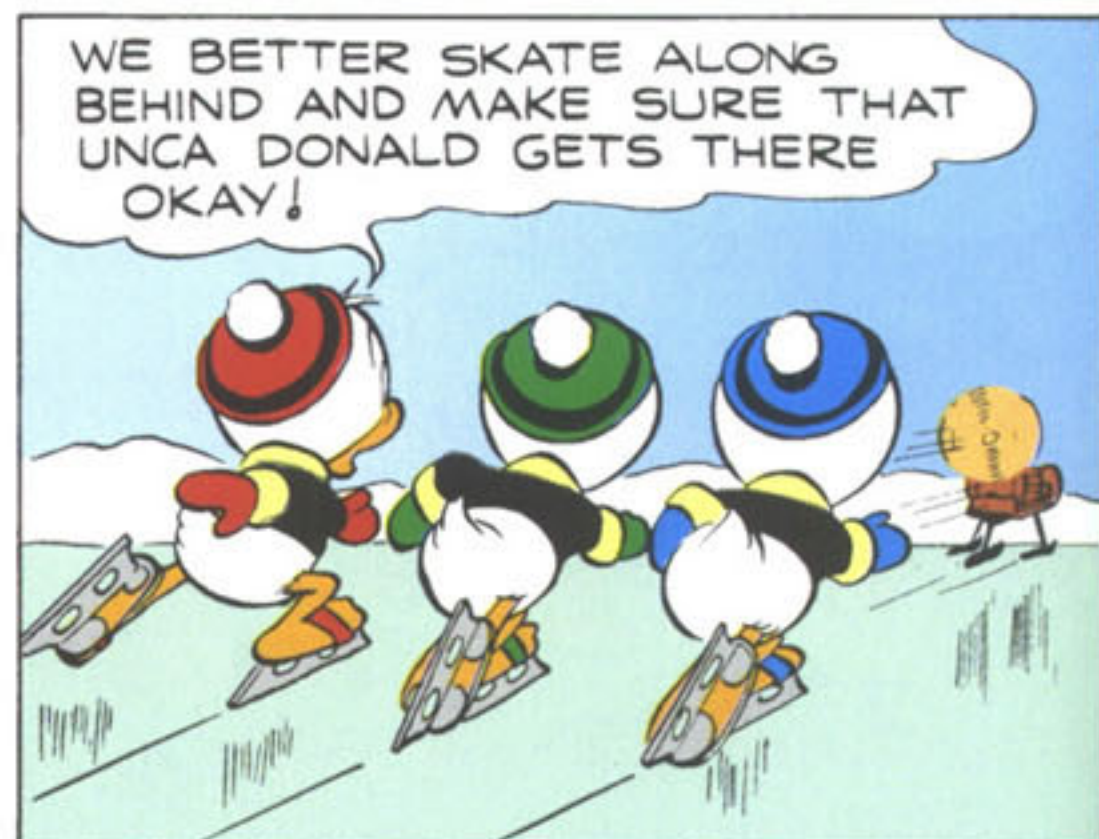
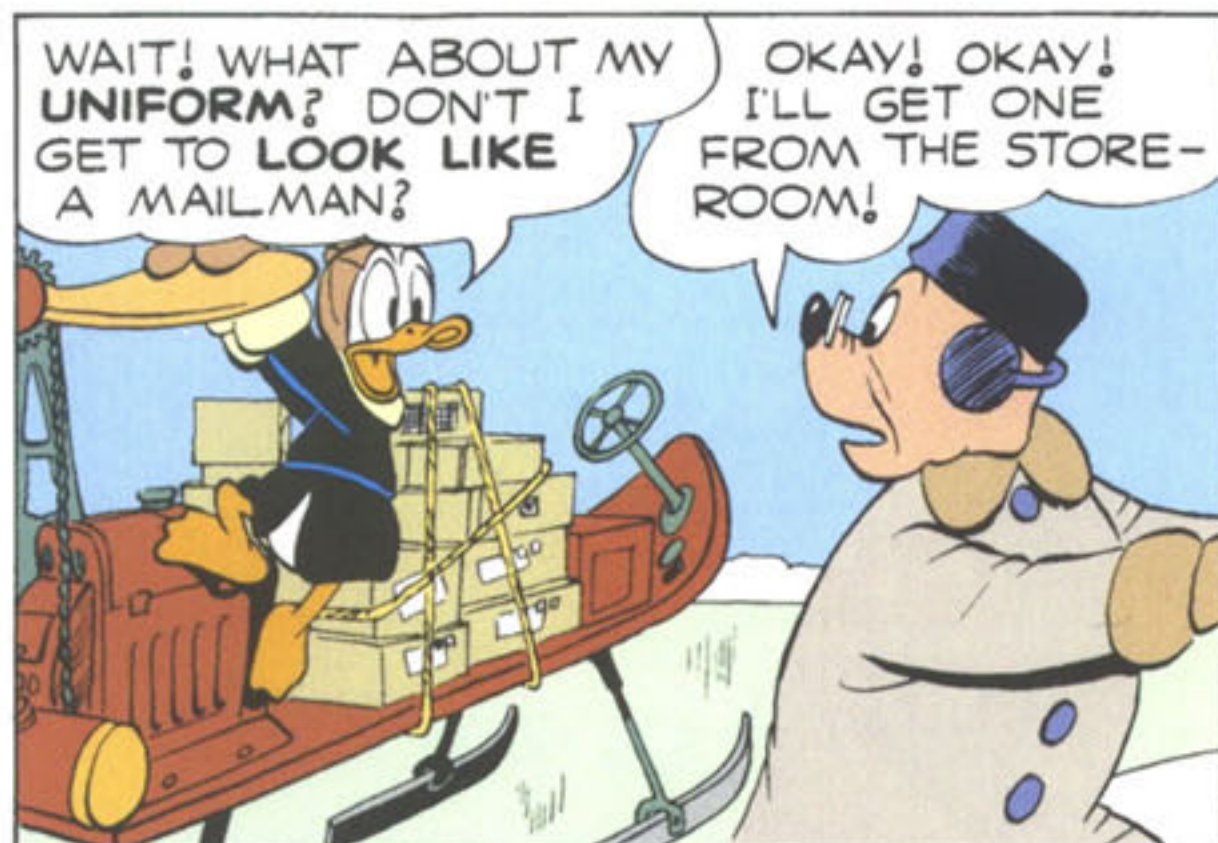
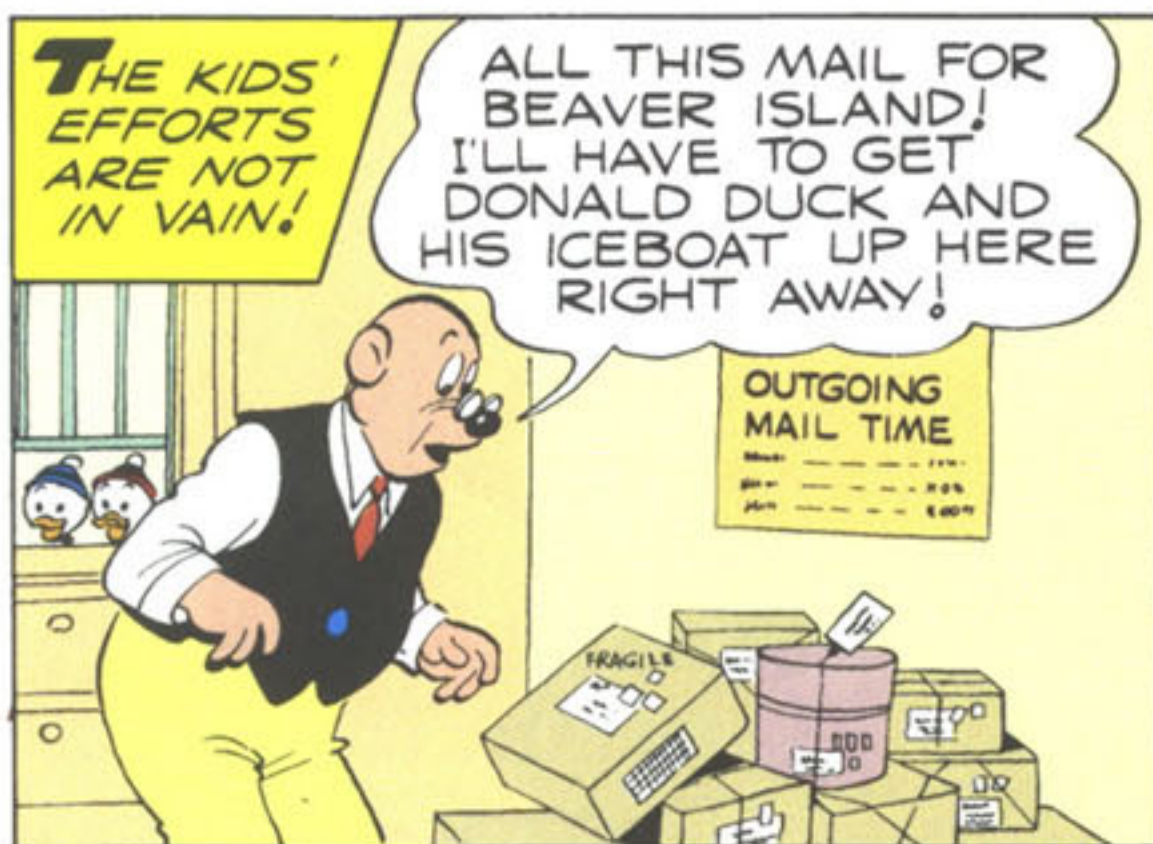
WALT DISNEY'S
COMICS AND STORIES

Donald Duck









THE WHITE RATS DON'T LIKE IT!

GNAW

BRR!

CHOMP!

CHOMP

COULD THAT BE THE **WIND** RUSTLING AROUND INSIDE MY COAT, OR IS IT—

A cartoon illustration of a sailor and a mouse. The sailor, wearing a blue uniform with yellow buttons and a blue cap with a yellow emblem, is looking at a white mouse. The mouse is wearing a black jacket with yellow buttons and has a speech bubble above it that says "WAK ?".

A cartoon panel showing Donald Duck in a grey military uniform with a yellow crest on his cap. He has a surprised expression. Two small white mice are in the foreground, one on the left and one on the right, both looking up at him. A speech bubble from the mouse on the left says "RATS!". The background is a solid blue color.

A cartoon illustration of Donald Duck dressed as a fireman. He is wearing a black fireman's uniform with yellow buttons and a matching cap with a yellow bell. He is being carried in the air by a large, brown mouse. The mouse is holding a green steering wheel, suggesting it is driving a vehicle, likely a fire truck. Donald Duck has a speech bubble above him that says "I'M INFESTED!". The background is a solid blue color.

A cartoon panel showing Donald Duck in a black suit and a grey captain's hat with a yellow emblem. He is driving a red car off the edge of a yellow brick wall. His eyes are squeezed shut, and his beak is open in a scream. A speech bubble above him says "WHOA!". The background is a solid blue sky.

THEY GNAWED THEIR WAY OUT OF THEIR BOX! I'LL FIX THAT!

YOU GUYS WILL RIDE ON THE **BOTTOM** WHERE YOU **CAN'T** GNAW OUT!

BRR!

BRR!

